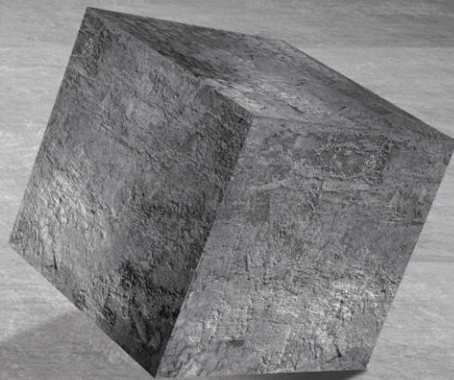


WE REINFORCE YOUR CONCRETE

MANA FIBER





Introduction

PAYA Wealth Management Group

PAYA Wealth Management Group has been established as an investment holding company with emphasis on manufacturing prosperity, economic development of country, creating sustainable employment opportunities and Iranian specialists and expert's ability to enhance the value of the company assets.

In this regard, Paya company purchased Bonyad P.P Fiber Production Factory in December 2019 and changed its name to Mana Servat Iranian Company.

Mana Servat Iranian Company

Bonyad P.P Fiber Production Company with more than 20 years of experience with European production line (PLASTICIZER CO.) is the first and oldest Iranian manufacturer and exporter in polypropylene fiber industry. The company has a history of exporting to more than 10 countries in this industry with taking the knowledge of the day, capable Iranian experts, lead the domestic market and also look at regional and global markets.

The fibers comply with the requirement of BS EN 14889 standard. the fibers cut to (3,6,12,19mm) but the production line has been designed to produce different fibers length for special costumers.





Technical Data

Raw Material	100% Virgin Polypropylene
Melting Point	160°C-170°C
Density	0.91 g/cm ³
Thickness	3 Denier
Tensile Strength	≥400 MPa
Fiber Length	3-6-12-19(mm)
Shape	Monofilament Fiber
Surface	Coated For Dispersion
Water Absorption	No
Acid Resistance	High
Alkali Resistance	High

How Impact On Concrete

Consumption Of Polypropylene Fibers In Concrete And Mortar

	(Kg/m3)	(Vf %)
Reduction Of Shrinkage Cracks	atleast 0.910	atleast 1%
Improve The Mechanical Strength,Increase Modulus Mf Rupture,Increase The Impact Strength	0.910<fiber<1.820	1%<fiber<2%

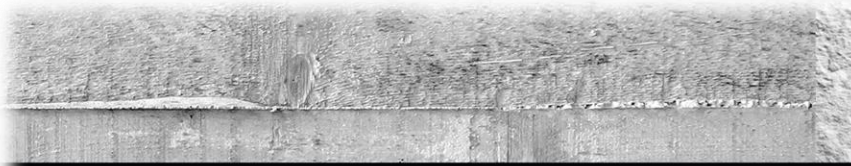
Different Applications:

- Resistant flooring in warehouses, cool store, industrial factories, gyms, livestock, petrochemical industries, pharmaceutical industries
- Paver blocks, barriers, concrete pipes with dry and wet press
- Types of concrete pavements such as RCCP, JPCP, JRCP used in paving airports, roads and parking lots , Spill way of dams and channels, concrete surfaces of hydraulic structures
- Woven prefabricated slabs
- mass concrete foundations
- Foundations of moving and impact machines (compressors, mills, cranes)
- A variety of road barriers (New Jersey), on-site and prefabricated culverts
- Types of prefabricated concrete parts covering long tunnels (segment in tunnel boring machine(TBM))
- Types of repair mortars, cement and gypsum plasters, sealing and polymer mortars
- Shotcrete (Sprayed concrete) for temporary and permanent protection of underground excavations, deep excavations .. to increase flexural strength, better adhesion and reduce throw.
- Prefabricated concrete slabs for rail paving (slab trucks) and various traverser
- Tower crane balance weights, side booms, cranes
- Concreting with slipform

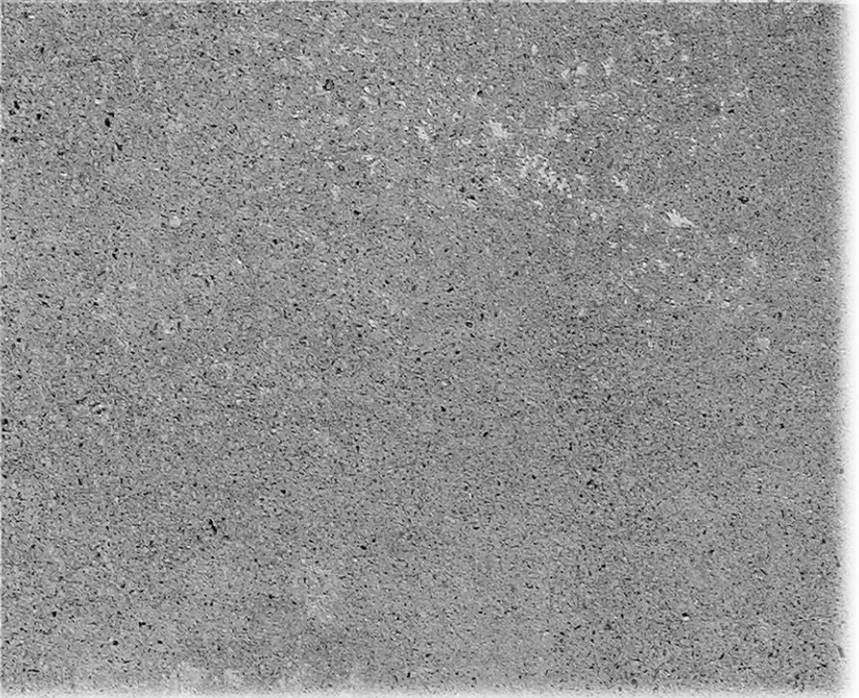
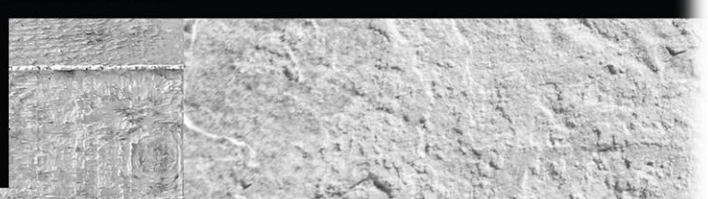


Advantages of application:

- Easy, fast and effective dispersion on the concrete matrix
- Significant reduction of cracks caused by plastic shrinkage, plastic drying and plastic settlement
- Extremely increase the impact resistance of concrete and mortar
- Improve the mechanical strength, especially flexural strength and toughness
- Improve and enhance the abrasion properties of concrete surfaces
- Increase the ductility of concrete
- Significant reduction of bleeding water on the concrete surface
- Significant improvement of concrete durability against de-icing salts and freezing and thawing cycles
- Reduce the permeability of concrete against salts and destructive liquids
- Very high durability against acidic and alkaline environments
- No negative impact of corrosion of reinforcements and embedded materials
- Reduce risk of explosive spalling and reduction
- Increase the consistency and cohesion of concrete during concreting and prevent segregation of concrete components
- No damage to equipment and machinery for construction, transportation and placing of concrete
- Increase and improve the finishing and texturing of the concrete surface
- Reduce formwork costs in concrete pavements
- Reducing the number of contraction joints and increasing the dimensions of concrete slabs in concrete flooring and pavements
- Reduction of electrical conductivity properties
- Fatigue resistance



MANA FIBER



Specialized function of concrete technology

Mana Servat Iranian Company, relying on its knowledge, expertise and experience with the help of customer research and development groups, is ready to provide the following services:

- ◆ Consulting for designing various types of concrete and cement mixtures in different applications and optimizing the consumption of fibers and additives
- ◆ Design different fiber sizes according to the type of application and concrete mix design components
- ◆ Different and tailored packaging to different needs for easy use and better dispersion of fibers in the production of cement, gypsum, concrete and waste reduction
- ◆ Investigating and feasibility of using fibers to reduce rebar and other reinforcing



MANA FIBER

Office Address: No16, Senoubar Alley, Sadaf Alley, Sarve gharbi Street, Kaj Square, Tehran, Iran

Postal code : 1998797717

Telefax : +98 2126740861 - +98 2124741039 - +98 2126741056

Factory Address: Next To Naragh Industrial Zone, Naragh Road, Delijan, Iran

Telefax : +98 8644463159

🌐 www.manafiber.com

✉ sales@manafiber.com